



www.rodexit.com a crucial cornerstone of first-class rodent exclusion

Rodent Proofing Stationary Gaps

October 2023

CONTENTS

- 1 Introduction 1
- 2 Tools and Materials 1
- 3 Examples 2
- 3.1 Example 1 – Adaption to an Uneven Paving 2
- 3.2 Example 2 – Angled Proofing 3
- 3.3 Example 3 – Wooden Fence 3
- 3.4 Example 4 – Pipe Holes 4
- 3.5 Example 5 – Gap Between Door Jamb and Wall 4
- 4 Tips & Tricks 4
- 4.1 Trimming 4
- 4.2 Mounting by Means of Double-Sided Tape 5
- 4.3 If a Very High Degree of Protection is Required 5
- 4.4 Monitoring and Maintenance 5

1 Introduction

The rodent resistant RodeXit seals are very flexible and can easily and fast be trimmed by means of ordinary tin snips and a Stanley knife. Therefore, they can be used for a lot of very different rodent proofing purposes. It is not possible to cover all aspects of all thinkable applications in a guide like this. It is therefore limited to some inspirational examples.

2 Tools and Materials

Depending on the character of your proofing project and the way you want to secure the seal you will need a selection of these tools and materials:

- 1) A roll of RodeXit’s rodent resistant All-In-One or WAVE seals.
- 2) Tin snips for trimming the seal – preferably straight tin snips with long blades.
- 3) A Stanley knife for trimming the seal.



4) A tape measure or another measuring device.



5) Suitable flatheaded screws e.g. 1 inch (25 mm) long No. 10 (4.8 mm) hex head screws or pan head screws.



6) Corresponding washers.



7) A corresponding screw bit.



8) A cordless screwdriver.



9) A drill bit for drilling pilot holes.



10) A staple gun and staples for makeshift attaching the seal.



11) Blobs of sticky power tack for makeshift attaching the seal.

If you want to use double-sided tape or glue, you will need some of these:

12) A roll of a suitable double-sided tape e.g. 3/4 in (19 mm) wide 3M VHB LSE 160 WF tape - not to be used for mounting the RodeXit WAVE seal.



13) An adhesive gun or a hot glue gun with a suitable glue e.g. 3M 760 Hybrid glue.



14) A degreasing agent for cleaning surfaces that are to be glued or taped.



15) A cloth for applying the degreasing agent.



16) A sharp-pointed knife for removing protective foil from double-sided tape.



17) A J-roller for applying pressure to double-sided tape joints.



3 Examples

3.1 Example 1 – Adaption to an Uneven Paving

These 2 pictures show how a RodeXit seal can be adapted to an uneven paving:



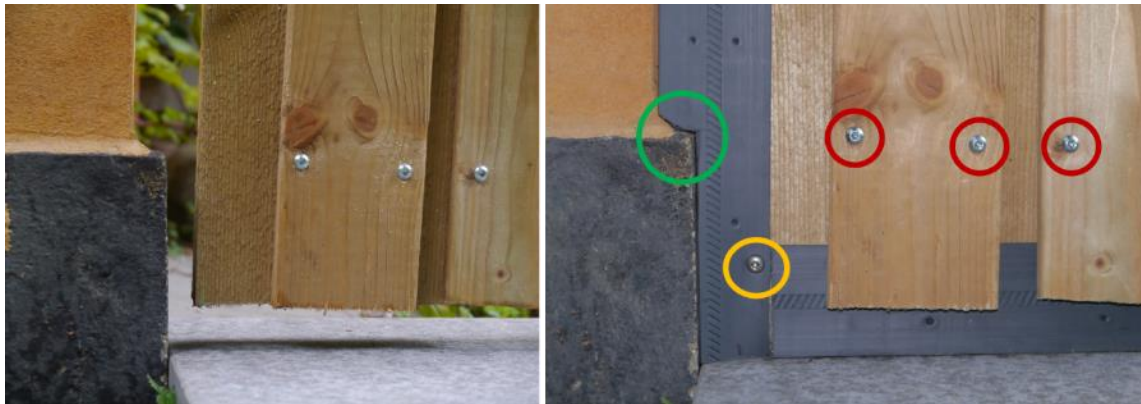
3.2 Example 2 – Angled Proofing

These 2 pictures show how a RodeXit seal due to its flexibility can be used for proofing gaps, that require an angled e.g. a perpendicular seal:



3.3 Example 3 – Wooden Fence

This fence was rodent proofed by means of 2 pieces of RodeXit seal:



The screws in every second board (the 3 red circles) were loosened and the horizontal seal was tucked in between the boards. Thereafter the screws were retightened.

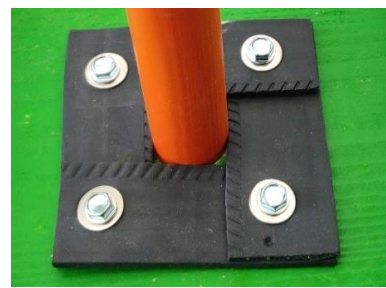
The vertical seal was secured by means of panhead screws (the orange circle).

The vertical seal was easily adapted to the black foundation and the orange wall to the left by means of straight tin snips (the green circle).

Because the RodeXit seals come in 12 yd (11 m) long rolls and are bendable, it is possible to proof quite long fences without any weak and time-consuming assemblies. It is even possible to proof corners without having to fit 2 pieces together. You just bend the seal round the corner.

3.4 Example 4 – Pipe Holes

These pictures show how pipe holes can be proofed by pieces of RodeXit seal secured by means of glue or screws and washers:



3.5 Example 5 – Gap Between Door Jamb and Wall



4 Tips & Tricks

4.1 Trimming

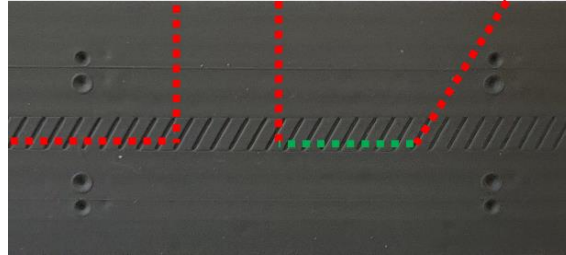
The length of the seal is best trimmed by means of straight tin snips with long blades because it is easier to make straight cuts with long blades than with short blades.



When a reduction of the width of the seal is called for, the seal can be split lengthwise by means of straight tin snips.



When it is necessary to adapt the seal to fixtures and other obstacles, crosswise cuts and some lengthwise cuts (the red dotted lines) can be made by tin snips while other lengthwise cuts (the green dotted line) are best made with a Stanley knife:



4.2 Mounting by Means of Double-Sided Tape

On www.rodexit.com you can download a guide to the use of double-sided tape for mounting RodeXit's All-In-One seal.



4.3 If a Very High Degree of Protection is Required

Under normal circumstances it is sufficient to install a single layer. If a particularly high degree of protection is required – for example because of a very high rodent pressure – you should consider installing a double layer.



you

A double layer is normally installed in the same way as a single layer.

4.4 Monitoring and Maintenance

All rodent proofed garage doors should at regular intervals be monitored for maintenance needs. The seals should be fixed or replaced if they e.g. due to severe rodent attacks are seriously compromised.

