



FIELD TRAINING AND TECHNICAL SERVICE GUIDE



The MagnaFly™ Treatment Station is a first-of-its-kind, contained fly treatment solution engineered to improve how professionals manage fly activity. It delivers consistent, controlled performance across a wide range of applications, with a focus on durability, ease of use, and reliability in demanding field environments.

FIELD DEPLOYMENT PROCESS

1. Inspection / Site Survey

Inspect the entire area to be protected, along with adjoining areas, for conditions conducive to fly activity. Identify potential food sources, breeding sites and entry points.

Use this step as a site survey to evaluate sanitation conditions, structural issues, and fly pressure. This supports recommendations for a complete fly management program and helps position MagnaFly as part of a value-added service.

2. IPM Strategy Development

Following an IPM-based approach, determine the appropriate control methods:

- A. Cultural
- B. Sanitation
- C. Exclusion
- D. MagnaFly Treatment Station placement
- E. Additional fly control measures

Placement Strategy

- Install in close proximity to active fly pressure
- Follow all label instructions for the fly bait being used
- Focus on known resting and feeding areas
- Target areas where moisture, organic debris, and breeding sites are present

- Position additional stations where fly activity is most likely to occur, prioritizing areas at or below 6 feet whenever possible
- Avoid direct line of sight to doors and windows to reduce the risk of drawing flies toward structures
- Position stations to intercept fly movement, not draw flies into buildings
- Avoid washdown areas and locations with strong airflow from fans
- Adjust station quantity based on fly pressure and site conditions (e.g., 2-4 stations around dumpsters, 1-2 around outdoor cooking areas; increase coverage as activity increases)
- Use additional lower placements in sanitation-sensitive zones where flies harbor and feed
- Secure using foam tape, zip ties, or VM ground stakes based on surface and environment

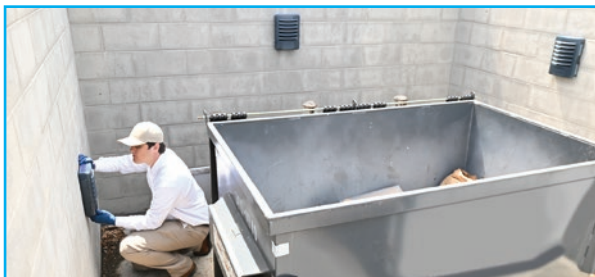
Pro Tip

Placement has a greater impact on performance than bait* volume. A light, even application in the correct location will outperform a heavy application placed incorrectly.

*Always follow pesticide label directions for use.

FLEXIBLE MOUNTING OPTIONS

Supports wall, post, pole, or in-soil placement for real-world field adaptability.



Mount to concrete walls using included foam adhesive



Secure to posts or poles using two integrated zip tie points



Screw into posts, fences, or poles for a rigid installation



Use the VM Universal Stake for ground-level placement



SERVICE PROCEDURE

- **Mount First:** Install stations before applying bait
- **Apply:** Apply fly bait to the ATC according to label directions
- **Dry:** Allow treated surface to fully dry before closing and securing the station
- **Open:** Use the VM Universal Key to access the station and confirm the ATC is dry and properly seated
- **Service:** Inspect, reapply bait as needed*, and maintain during routine service visits

MAGNAFLY SERVICE & MAINTENANCE

- Follow all product label instructions for mixing and application. The Active Treatment Surface (ATC) measures approximately 0.4 square feet. Flies landing on the treated surface will consume bait from the carpet fibers. Apply a light, even treatment do not overapply.
- Close and secure the MagnaFly Treatment Station after servicing.
- Recurring service should include inspection and maintenance of the full fly program, along with each MagnaFly station. Open the station using the VM Universal Key, inspect the interior and ATC, reapply bait as needed*, and secure the unit.
- Inspect every 7–30 days
- Reapply bait when activity persists or bait is depleted*
- Replace carpet if saturated, moldy, or heavily soiled

*Always follow pesticide label directions for use.

Common Mistakes to Avoid

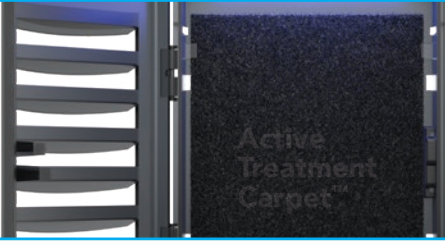
- Overapplying bait
- Placing too far from active fly pressure
- Allowing rain into the station during installation

WHAT MAKES MAGNAFLY DIFFERENT



OPTICAL ENHANCEMENT SKYLIGHT TECHNOLOGY

The Skylight sits atop the MagnaFly Treatment Station. Its domed design disperses light evenly throughout the station to improve visibility and performance.



PROTECTED ACTIVE TREATMENT SURFACE

Fly control products applied to the Active Treatment Carpet are shielded from environmental exposure, helping maintain performance and extend effectiveness between service visits.

GUIDED INTERNAL FLY MOVEMENT

Once inside, flies are naturally directed toward a controlled treatment surface, improving exposure and contact with applied bait.

STRATEGIC VISUAL DESIGN ELEMENTS

Dark coloration, internal crevices, striped patterns, and clearly defined landing zone edges combine to create a highly attractive entry and resting environment.

DUAL-FUNCTION VENTING SYSTEM

Vent placement allows water resistance while also providing natural entry points and landing access for flies.



OPTIMIZED AIRFLOW AND ENTRY DESIGN

Multiple vents on the bottom and sides enhance airflow through the station while maintaining protection from rain and debris.

DURABLE, SERVICE-READY CONSTRUCTION

Built with long-lasting materials and a reinforced hinge design to withstand repeated service cycles and demanding field conditions.

ENVIRONMENTAL PROTECTION ENHANCEMENT

The venting system (front, bottom, and sides) is engineered to promote airflow and natural fly entry while helping protect the inside of the station, preserving bait integrity and maintaining performance in exterior and high-moisture environments.