

INTEGRATED MOSQUITO MANAGEMENT PROGRAM

STEWARDSHIP



veseris.com/mosquitocon



© 2024 ES OpCo USA LLC. All Rights Reserved. The Veseris mark, logo, and other identified trademarks are the property of ES OpCo USA LLC or its affiliates. All other trademarks not owned by ES OpCo USA LLC or its affiliates that appear in this communication are the property of their respective owners.

VESERIS IMMP BROKEN DOWN INTO **4** STEPS



STEP 1

Step 1: Inspect, Identify & Eliminate Breeding Sources when possible

- Tip and Toss Method (when applicable): once a week, items that hold water like tires, buckets, planters, toys, pools, bird-baths, flowerpot saucers, and trash containers should be emptied, turned over, covered, and/or thrown away.
- Maintain proper drainage to prevent standing water: gutters full of debris, overgrown landscaping, properly functioning irrigation systems, etc.



STEP 1

EXAMPLES



STEP 2

Step 2: Treat standing water breeding sites with Natular® DT larvicide tabs

- PLACE NATULAR® DT TABS where conducive conditions exist: ornamental fishponds, ornamental pools or fountains, unused swimming pools, bird baths, old tires, flowerpots and urns, water gardens, floor/french drains, roof gutters and other water-holding receptacles.



STEP 2

EXAMPLES

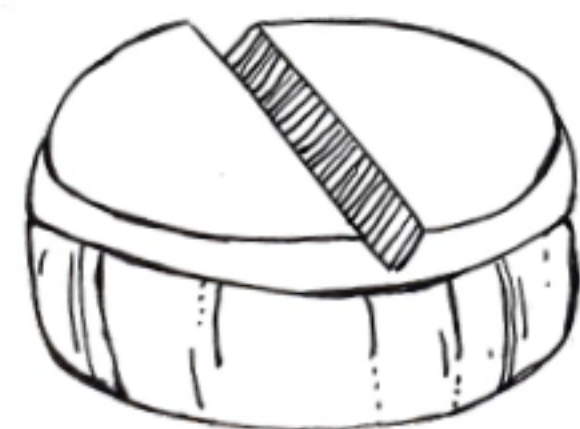


STEP 2

Natular[®] DT Larvicide



HOW DOES NATULAR DT WORK?



Click on the video to play.

STEP **2**

Natular[®] DT Larvicide

Frequently Asked Questions

Q What is the active ingredient in Natular[®] DT larvicide?

A Spinosad. It is a naturally-derived active ingredient produced during fermentation by the soil organism, *Saccharopolyspora spinosa*. The natural metabolites produced during the fermentation process were termed “spinosyns.” Spinosad is the collective term for the two most prominent and most active compounds in the fermentation broth (spinosyn A and spinosyn D). Hence the name “Spinosad.” Spinosad has been used since 1999 on more than 250 crops and in consumer and animal health uses in over 85 countries. Its first use in public health began in 2009, when it was introduced as the active ingredient in Clarke’s Natular[®] brand of mosquito larvicides. Spinosad received the USEPA’s Presidential Green Chemistry Challenge Award in 1999 as a novel natural insecticide that provided a new mode of action against target pests and provided a good environmental profile compared to traditional synthetic pesticides. More information about this award for Spinosad can be found at <https://www.epa.gov/greenchemistry/document-green-chemistry-challenge-award-recipients-1996-2016>.

Q How is the active ingredient manufactured?

A Spinosad is produced in a state-of-the-art fermentation facility in the United States, using natural feed-stocks to maintain the fermentation process.

Q Is Natular DT an EPA Registered product?

A Yes. Natular DT was registered with the EPA in 2008 and is approved for use in 49 states. In fact, Clarke received the USEPA Presidential Green Chemistry Challenge Award in 2010 for the unique formulation and tablet technology of Natular DT. More information about our award for this innovation can be found at <https://www.epa.gov/greenchemistry/presidential-green-chemistry-challenge-2010-designing-greener-chemicals-award>.

Q How does Natular DT work?

A Natular DT is an easy-to-use, bi-layer tablet containing spinosad that prevents mosquito larvae from becoming biting adults. It has an effervescent layer that releases active ingredient immediately, while the rest of the tablet continues to work for up to 60 days. If dry down occurs inside a container treated with Natular DT, the tablet is reactivated when water is present again.

Q What types of mosquito larvae can Natular DT control?

A Natular DT can control the larvae of both nuisance and disease vectoring mosquitoes, including those that can carry and transmit diseases, such as West Nile virus, Dengue and Zika. Natular DT is effective on larvae from all four instar stages and has been tested on twenty of the most common vector and nuisance mosquito species.

STEP 2

Natular[®] DT Larvicide

Frequently Asked Questions CONTINUED

Q Where should I use Natular DT?

A Natular DT was formulated specifically to control mosquito larvae in outdoor containerized water sources commonly found around residential and commercial properties. These include sites such as buckets, old tires, empty pots, gutters, natural and man-made depressions (pot holes, tire tracks, swales, ditches, etc.), tree holes and more. Please refer to the product's label for a full list of application sites.

Q How much Natular DT should be used to treat containerized water?

A One tablet can treat up to 50 gal. or 25 sq. ft. of surface water, up to 6 in. deep, for up to 60 days. Any remaining tablet may be reused after cleaning out a containerized water source. See label for complete instructions.

Q Can I use water treated with Natular DT for watering plants or a garden, or washing pets?

A Yes. When used according to label instructions, water treated with Natular DT, such as in a rain barrel or a "self-watering" planter, may be used to water residential plants, flowers, or vegetable gardens. It will not damage the plants, and will not harm pets (or people) who consume the plants or bathe in the water."

Q Can I use Natular DT tablets indoors?

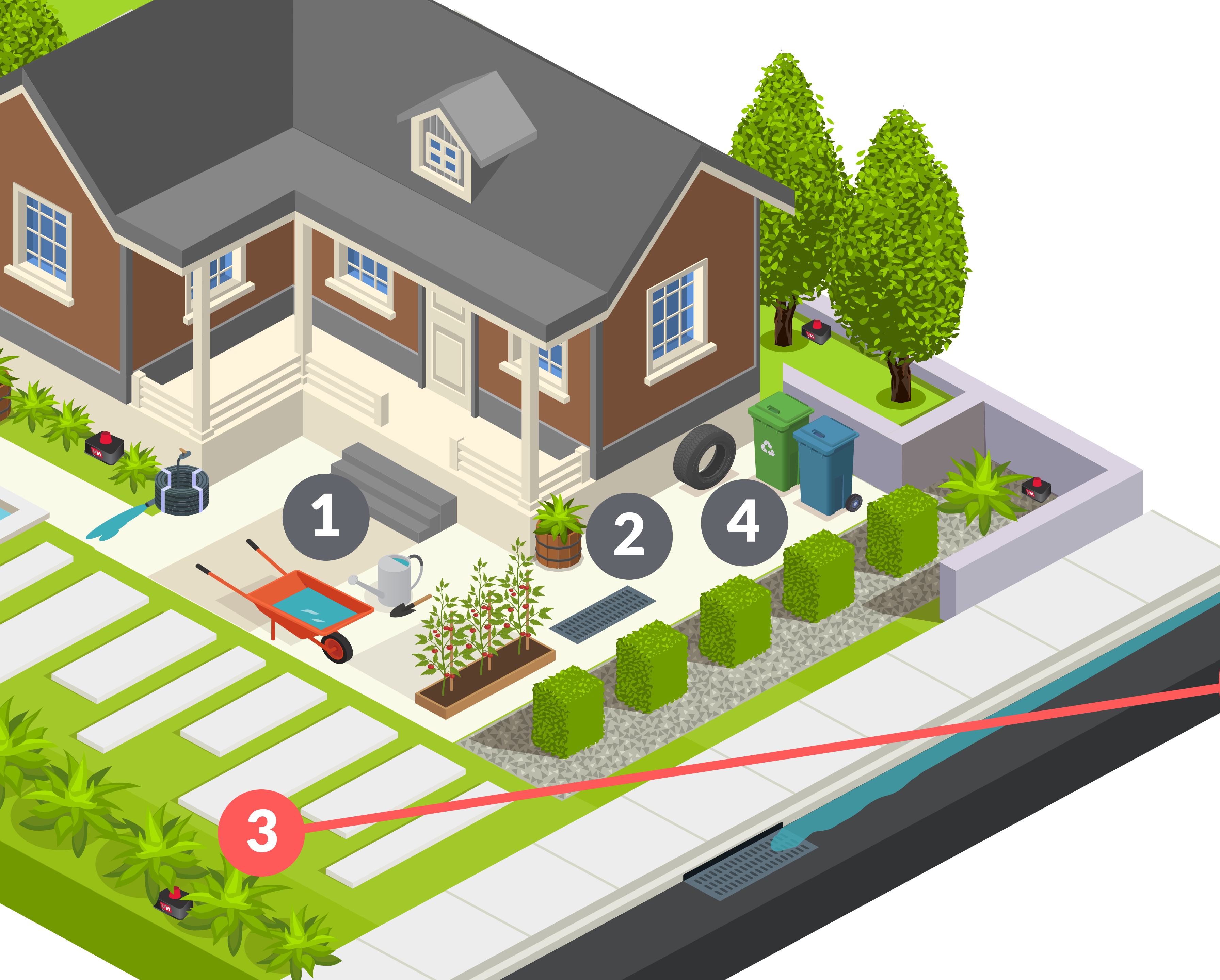
A Per the product label, Natular DT is intended for Outdoor Use only.

Q Should I use Natular DT in my swimming pool?

A Normal chlorinated swimming pools with a working pump system would not require Natular DT. The pool's pumping system keeps the water moving enough to prevent mosquito breeding. However, unused swimming pools that collect water when it rains, commonly referred to as "green pools," can be mosquito breeding sources, and it would be beneficial to treat that water source with the appropriate number of tablets, based on the pool's size and water volume. Please refer to the label for complete dosing instruction.

Q Is Natular safe for the environment?

A Spinosad was the first larvicide registered under the EPA's Reduced Risk program due to its reduced risk to human health and non-target organisms when compared to other available alternatives. Spinosad is not toxic to birds, terrestrial wildlife, or fish. While spinosad is toxic to some aquatic invertebrates, following the label use directions will minimize the risk to these organisms.



STEP 3

Step 3: Deploy MosquitoCon™

- PLACE MOSQUITOCON™ WATER HOLDING RECEPTACLE IN LANDSCAPE AREAS:
Ideally on each side of the house (2-3 per quarter acre).
- Add 96 oz of water plus one tab of Natular DT® Mosquito Larvicide.
- MosquitoCon™ receptacles can be placed as a standalone treatment. Though for optimal control, incorporate with an adulticide barrier spray.
- If you add the adulticide barrier spray as outlined in Step 4*, please complete the spray treatment first, then place the MosquitoCon™ water holding receptacle.



STEP 3

MOSQUITOCON™ BY VM

The next innovation in backyard management



SNELL SCIENTIFIC MOSQUITO ENTRY ASSESSMENT

Test results indicate an entry rate exceeding 90% for the primary container mosquito species, *Aedes aegypti*.

Trial: AEDSAE

LOW-PROFILE DESIGN

Makes it an ideal choice for various settings.

HEAVY-DUTY CONCRETE BLOCK

The unit's weighted construction ensures it remains securely in place throughout the year, eliminating the need for end of season service trips.

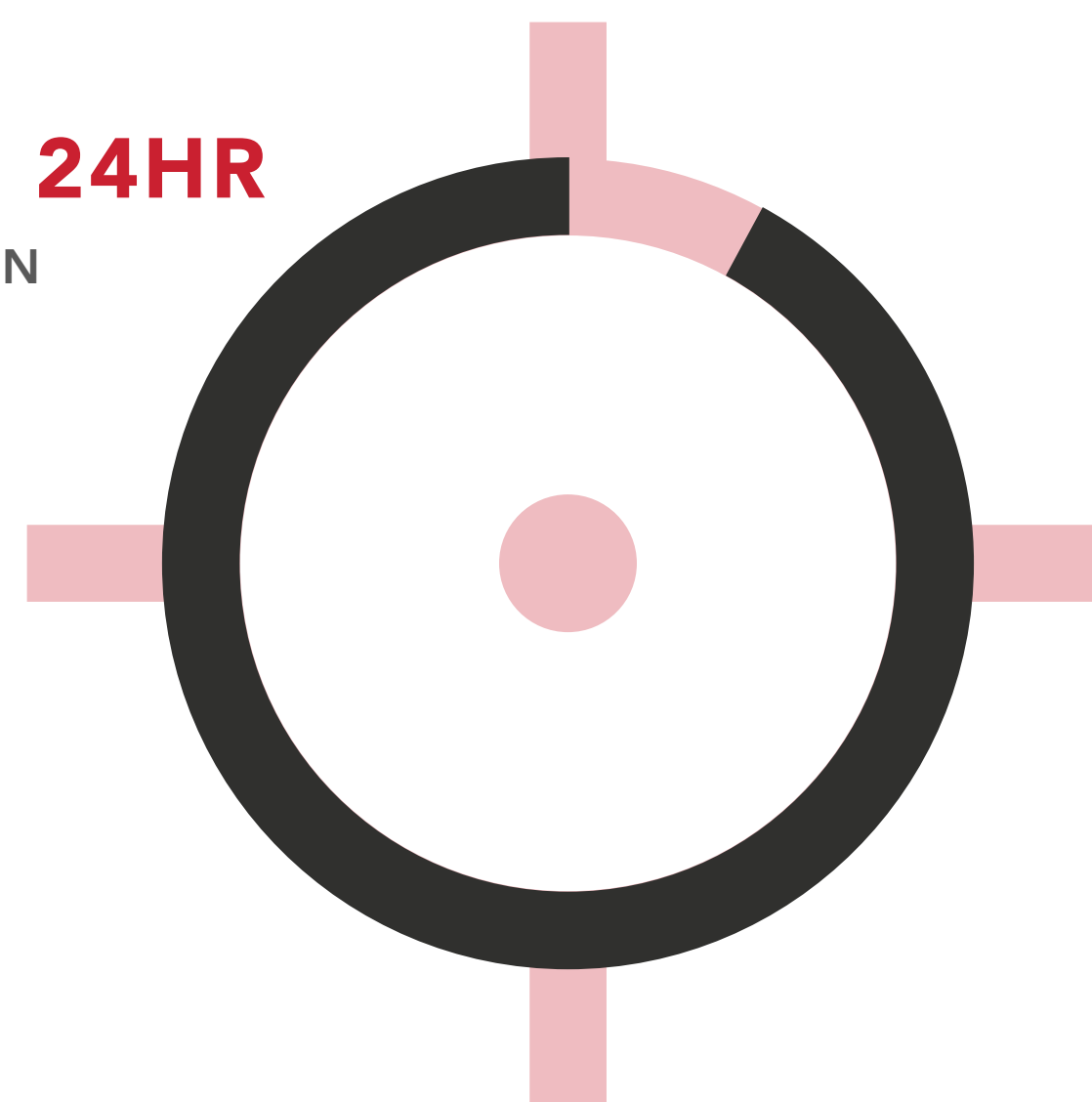
STEP 3

SNELL SCIENTIFIC MOSQUITO ENTRY ASSESSMENT

Test results indicate an entry rate exceeding 90% for the primary container mosquito species

MOSQUITOCON PERCENT CAUGHT TEST (Yellow Fever Mosquitos)

90% IN 24HR
WITH MOSQUITOCON STATION
W/ 70 FL.OZ. WATER

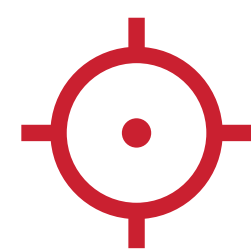


97% IN 48HR
WITH MOSQUITOCON STATION
W/ 70 FL.OZ. WATER

SNELL
SCIENTIFICS, LLC.

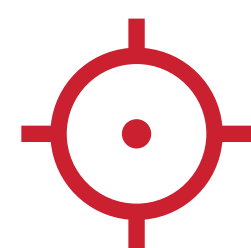
Trial: AEDSAE
24hr - 48hr Study

STEP 3



VM PRODUCTS' PRIVATE LABEL PROGRAM

VM Products' Private Label Program offers an exceptional opportunity for Pest Management Professionals to enhance their brand visibility and customer loyalty.



MOSQUITOCON PLACEMENT

2-3 Stations per ¼ acre
3-4 Stations per ½ acre

RECEPTACLE HOLDS 96oz WATER

Extended use in the field, to maximize your service interval.

MOSQUITOCON™
BY VM



STEP 3

Natular[®] DT Larvicide



One Tab Per Station = 60 Days of Control

MosquitoCon + Natular DT is the new alternative for perfect and easy mosquito control. The MosquitoCon water holding receptacle attracts the mosquito into the receptacle and the Natular DT Larvicide combines ease of use with uncompromising efficacy to kill mosquito larvae and prevent mosquito breeding. MosquitoCon + Natular DT is an ideal part of an Integrated Mosquito Management Program to control mosquitos in any backyard or open space setting.

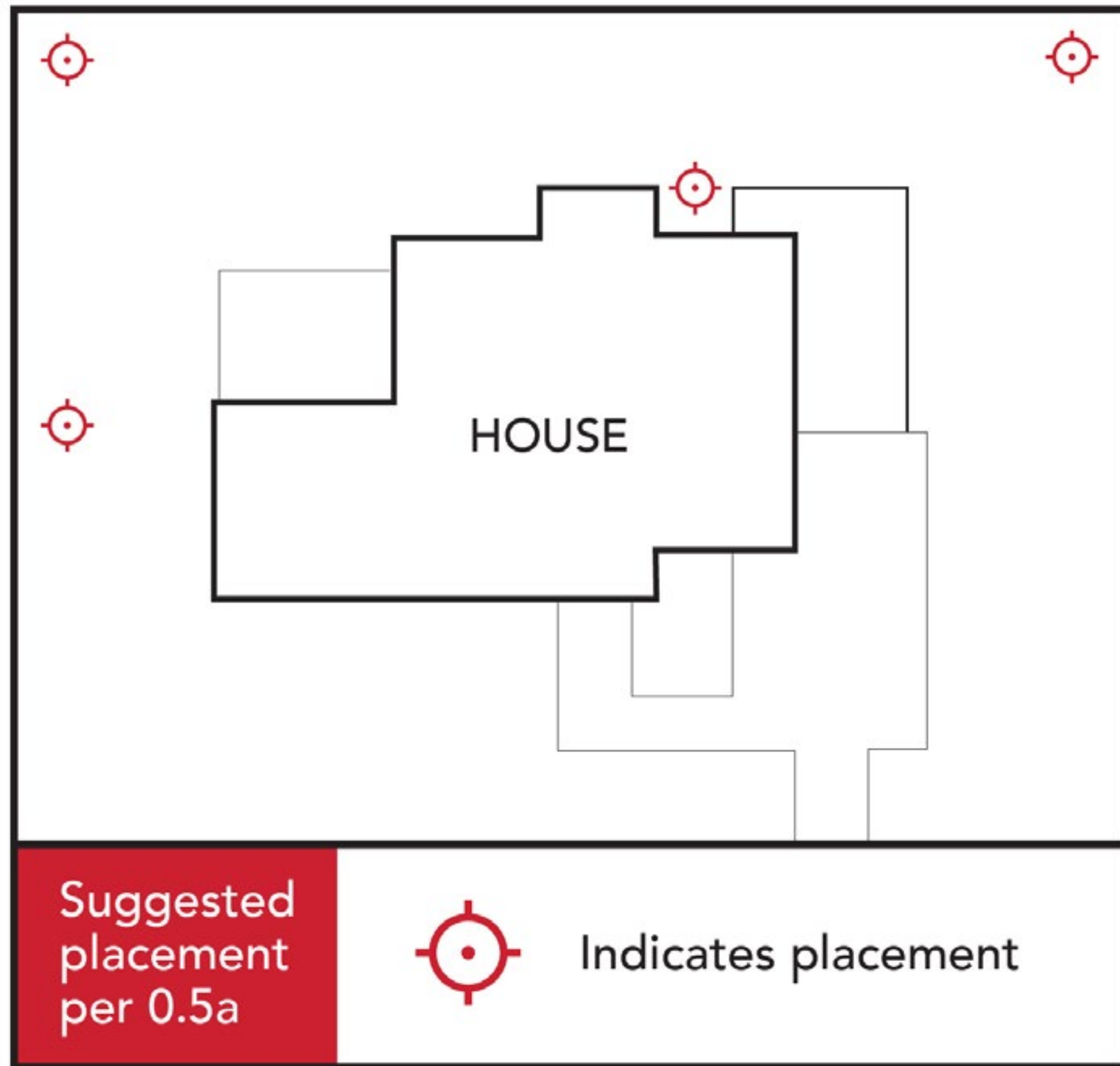
NATULAR DT PRODUCT SPECS

- Formulated specifically for treating containerized water sources.
- One tablet can treat up to 50 gal. or 25 sq. ft. of surface water, up to 6 inches deep. See label for complete instructions.
- Sold in convenient 50-count blister packs for accurate dosing, easy application, and efficient shipping and storage.
- If dry down occurs, the tablet effectively reactivates when water is present again.

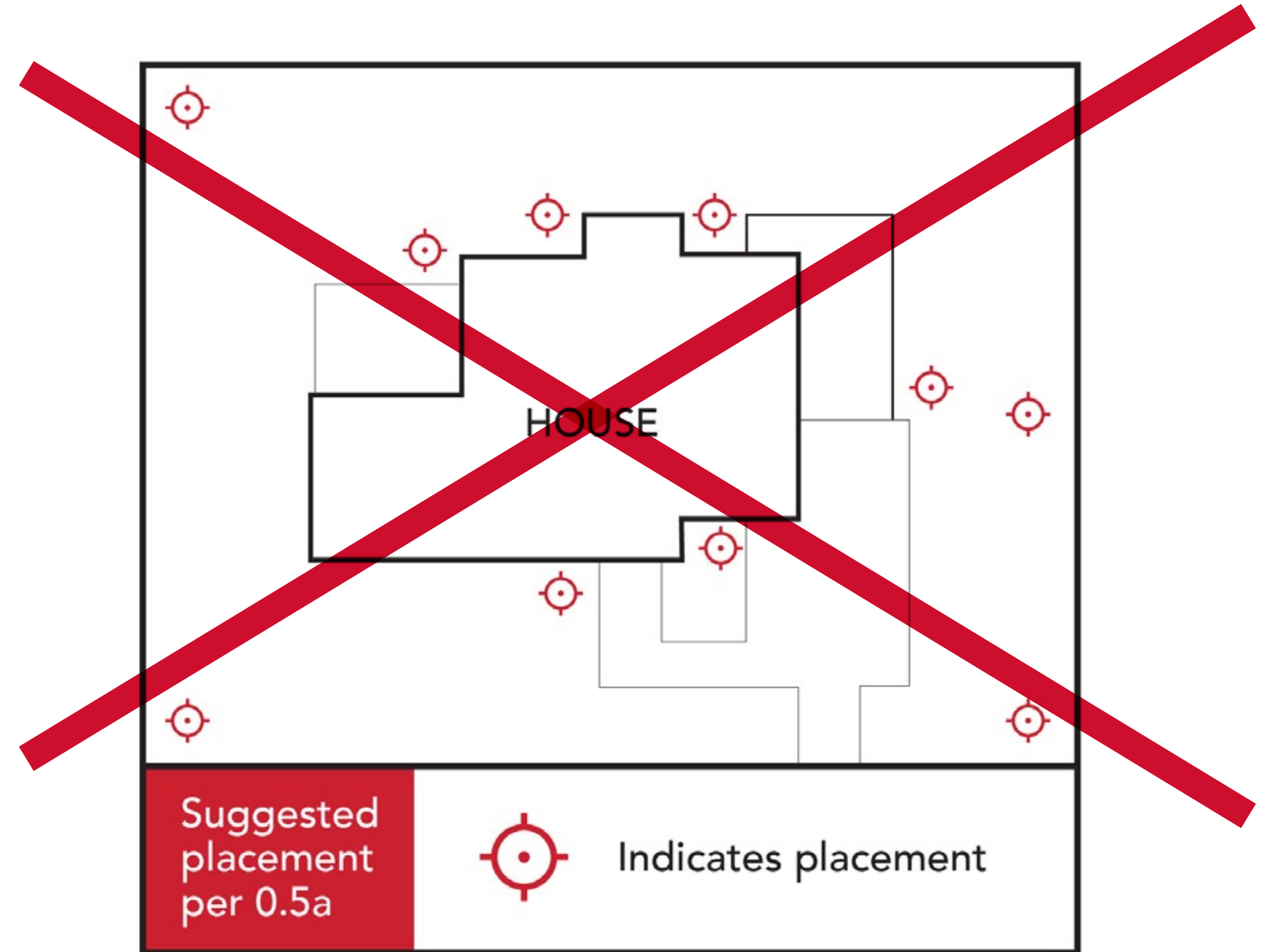


STEP 3

Correct placement due to spacing and suitable areas



CORRECT PLACEMENT

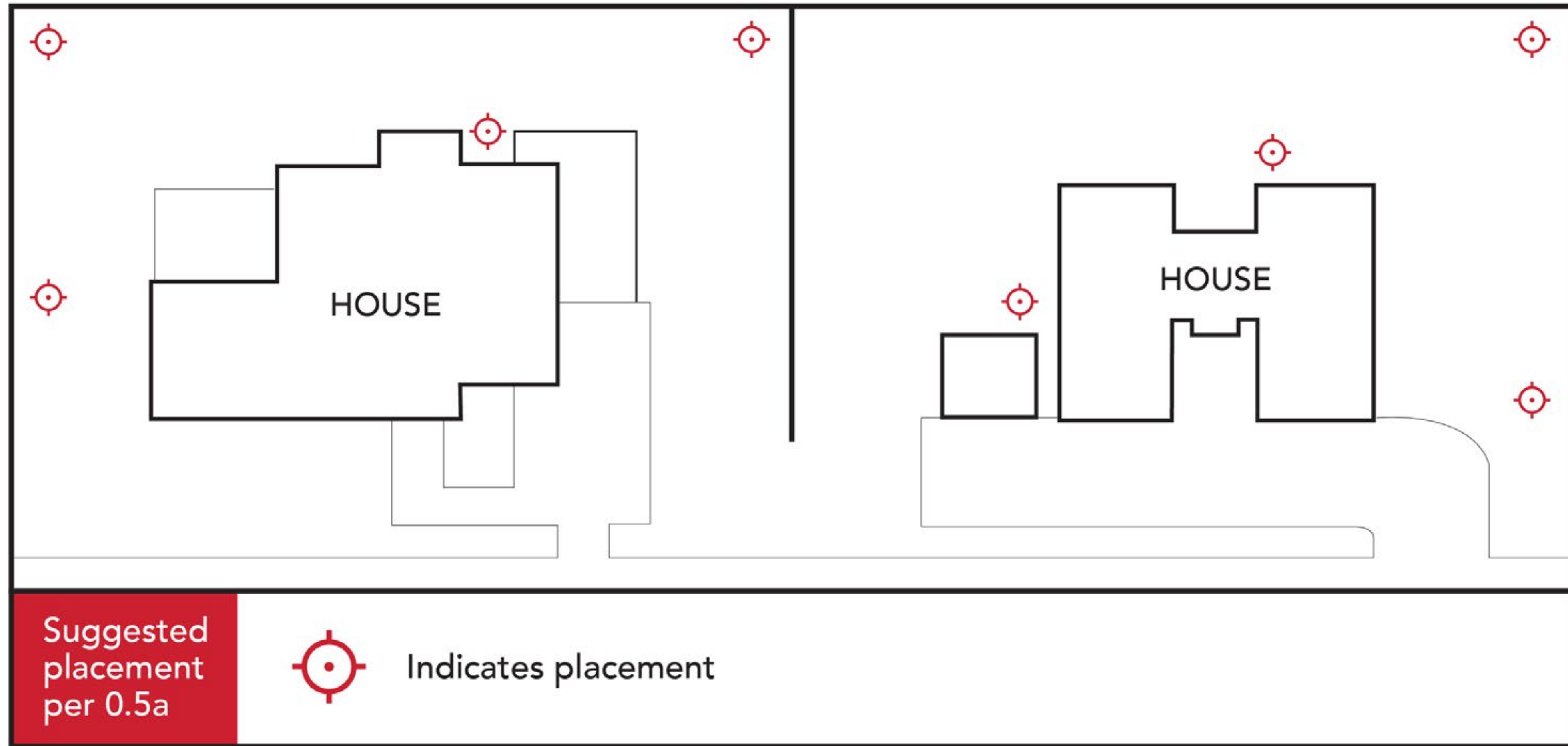


INCORRECT PLACEMENT

STEP

3

Correct placement of MosquitoCon water holding receptacles when used in adjacent houses/properties. They should never be placed adjacent to each other on a fence line or neighboring property.



CORRECT PLACEMENT in adjacent properties

STEP 4

Step 4: Treat Remaining Areas as Appropriate*

- **ADULTICIDE BARRIER APPLICATION:** Use of a residual product applied to the sides of structures and landscape vegetation using a mist blower. The intention is to apply product to the surfaces where mosquitos roost.
- Always read and follow label directions and apply at recommended rates.
- **RECOMMENDED PRODUCTS:** MasterLine® B MaxxPro, Cy-Kick® CS, Demand® CS, Duraflex® ZC, Fendona® CS, OneGuard®, Talstar®, Scion®, Suspend® PolyZone®



CAUTION
If applying a barrier application, always cover or remove MosquitoCon prior to application.



STEP 4



CAUTION

If applying a barrier application, always cover or remove MosquitoCon prior to application.

STEP 4

RECOMMENDED PRODUCTS FOR THE VESERIS INTEGRATED MOSQUITO MANAGEMENT PROGRAM

ADULTICIDES

CAUTION: If applying a barrier application, always cover or remove MosquitoCon prior to application.

Always read and follow the label directions. Products may not be registered in every state.



veseris.com/mosquitocon

MasterLine® B MaxxPro

Manufacturer: Vesperis
Vesperis Product Number*: 824654
Active Ingredient: 7.9% bifenthrin
Formulation: EC
Signal Word: Caution

Mosquito Control Application Rate
(fl. oz concentrate per gallon of water)
Low: 0.33
High: 1.00



Cy-Kick® CS

Manufacturer: BASF
Vesperis Product Number*: 678792
Active Ingredient: 6% cyfluthrin
Formulation: CS
Signal Word: Caution

Mosquito Control Application Rate
(fl. oz concentrate per gallon of water)
Low: 1.00
High: 2.00



Demand® CS

Manufacturer: Syngenta
Vesperis Product Number*: 884349
Active Ingredient: 9.7% lambda-cyhalothrin
Formulation: CS
Signal Word: Caution

Mosquito Control Application Rate
(fl. oz concentrate per gallon of water)
Low: 0.20
Mid: 0.40
High: 0.80



DuraFlex ZC

Manufacturer: Control Solutions Inc.
Vesperis Product Number*: 882847
Active Ingredients: 3.95% bifenthrin, 1.3% novaluron, 1.3% pyriproxyfen
Formulation: CS
Signal Word: Caution

Mosquito Control Application Rate
(fl. oz concentrate per gallon of water)
Low: 1.00
High: 2.00



Fendona™ CS

Manufacturer: BASF
Vesperis Product Number*: 831442
Active Ingredient: 3% alpha-cypermethrin
Formulation: CS
Signal Word: Caution

Mosquito Control Application Rate
(fl. oz concentrate per gallon of water)
Low: 1.00
High: 2.00



OneGuard®

Manufacturer: MGK
Vesperis Product Number*: 833484
Active Ingredients: 4% lambda-cyhalothrin, 0.40% prallethrin, 1.3% pyriproxyfen, 6% PBO
Formulation: ZW
Signal Word: Caution

Mosquito Control Application Rate
(fl. oz concentrate per gallon of water)
Low: 1.00
High: 2.00



Talstar® P

Manufacturer: FMC
Vesperis Product Number*: 754966
Active Ingredient: 7.9% bifenthrin
Formulation: SC
Signal Word: Caution

Mosquito Control Application Rate
(fl. oz concentrate per gallon of water)
Low: 0.33
High: 1.00



Scion™

Manufacturer: FMC
Vesperis Product Number*: 844727
Active Ingredient: 5.9% gamma-cyhalothrin
Formulation: Proprietary
Signal Word: Caution

Mosquito Control Application Rate
(fl. oz concentrate per gallon of water)
Low: 0.16
Mid: 0.33
High: 0.65



Suspend® PolyZone®

Manufacturer: Envu
Vesperis Product Number*: 832756
Active Ingredient: 4.75% deltamethrin
Formulation: SC, with polymer
Signal Word: Caution

Mosquito Control Application Rate
(fl. oz concentrate per gallon of water)
Low: 0.25
Mid: 0.75
High: 1.50





If you have any questions about the Veseris
INTEGRATED MOSQUITO MANAGEMENT PROGRAM,
please talk with your local Veseris sales representative.

